



MEMO

From	OC SAF	To	OC Units
Ref	AAD1-08/11-2	CC	Major Unit Cdrs, HQ, Web Master
Tel	27128900	Date	23 September 2008
Fax	27156944		

**Autumn Adventure Activities Promotion Project
Abseiling Activity Day (AAD1) 2008/11**

Organised by Roping Technique & Abseiling Section

Details of the Programme: -

<i>Date</i>	04 October 2008 (Sat)
<i>Time</i>	1430 – 1730 hrs
<i>Venue</i>	Mui Tsz Lam, Ma On Shan Country Park Shatin, New Territories (please see the map in Appendix 1)
<i>Roll Call</i>	1330 hrs at Chevalier Garden near bus terminus (southeast of MTR Ma On Shan Line Tai Shui Hang Station, 5~10 minutes by foot; please see the map in Appendix 2)
<i>Dismiss</i>	1800 hrs, MTR Tai Shui Hang Station
<i>Fee</i>	HK\$20
<i>Dress Code</i>	No. 3B Field Dress
<i>Equipment</i>	500 ml Water, Sunblock and Mosquito Repellent
<i>Remark</i>	Please bring along the Cadet Training Record Book

2 Shortlist of Participants

No	Unit	Rank	Name	Serial No
1	KIn Wg	Ag P/O	LAM Po-man	O-1770
2	TFF	F/L	Peter Kee-wah NG	O-1665
3	TFF	P/O	Eddie Chun-ming CHEUNG	O-1942
4	TFF	P/O	Danny Kam-kong TING	O-2160
5	TFF	P/O	Janice Wai-mei CHAN	O-2149
6	TFF	Instr	TSUI Pui-kei	O-2309
7	TFF	P/O	Carey Ka-ki LAM	O-1929
8	TFF	Instr	Maggie Mei-kay CHAN	O-1834
9	TFF	Sgt Instr	LEUNG Chi-kwong	O-2352
10	TFF	Instr	Ronald Ying-wai NG	O-2101
11	HOCU	P/O	TSOI Chak-ming	O-2162

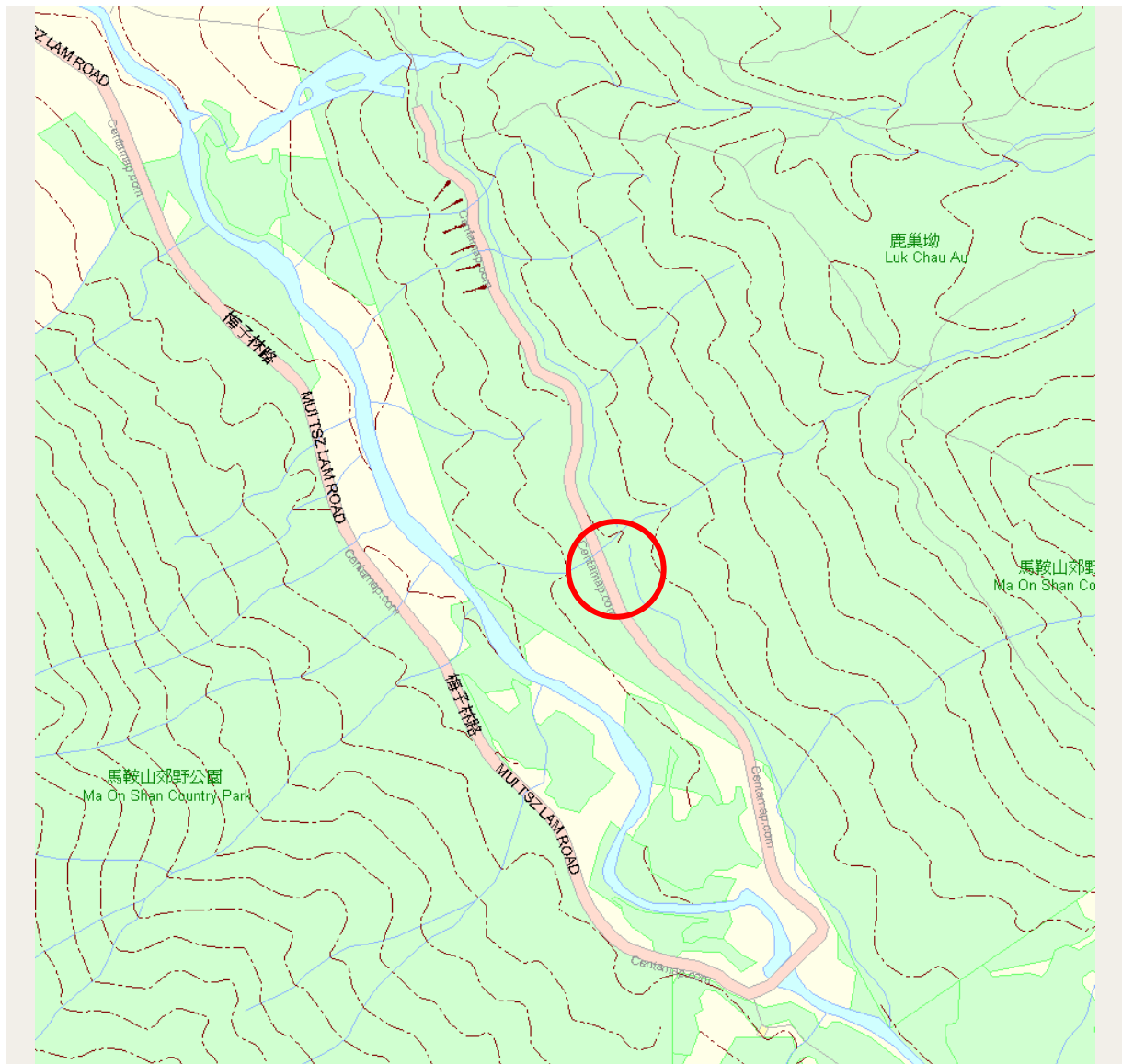
3 Officer-in-charge of the programme is Plt Off Yanny LAI. Should you have any query, please do not hesitate to contact Sgt Instr John NG at 82002949.

Frankie F C POON
Fg Off (sp)
OC SAF



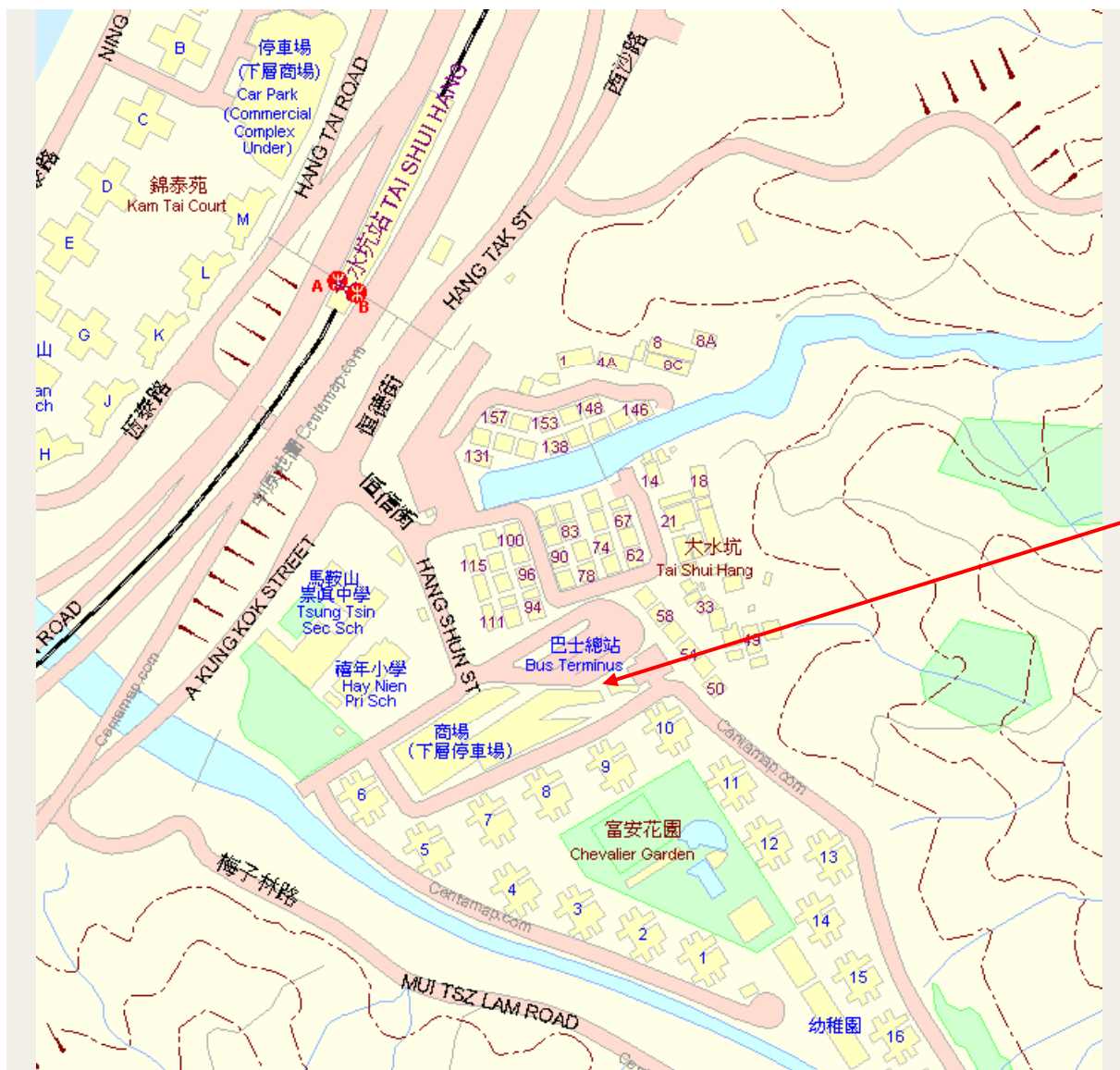
Appendix 1

Location of Mui Tsz Lam, Ma On Shan Country Park



Appendix 2

Location of Gathering Place



Remarks of Typhoon / Rainstorm Procedures

1. When Typhoon Signal No.3 or above, Red or Black Rainstorm Signal is hoisted two hours prior to an outdoor activity, that activity must be cancelled and rescheduled.
2. When Typhoon Signal No.3 or above, Red or Black Rainstorm Signal is hoisted, all outdoor activities must cease and all members must return home or take shelter in a safe place.
3. When Typhoon Signal No.8 or above, Black Rainstorm Signal is hoisted, all indoor activities must cease and members must return home or take shelter in a safe place.